

VALVES

High-pressure valves

Valve forged steel high-pressure valves are the ideal solution for many critical applications (e.g. steam parameters of up to 625 °C and 365bar). Only optimised designs can withstand the fast start-up and shut-down processes required today and the resultant high loads.

For high-pressure chemicals and petrochemicals supplies forged steel high-pressure valves with bolted cover flanges made of multiple special materials.

We develop, calculates, machines, assembles and inspects valves based on optimum compliance with the respective operating conditions or the **conditions as per ASME**.

Gate valves with self-sealing cover closures or with bolted covers

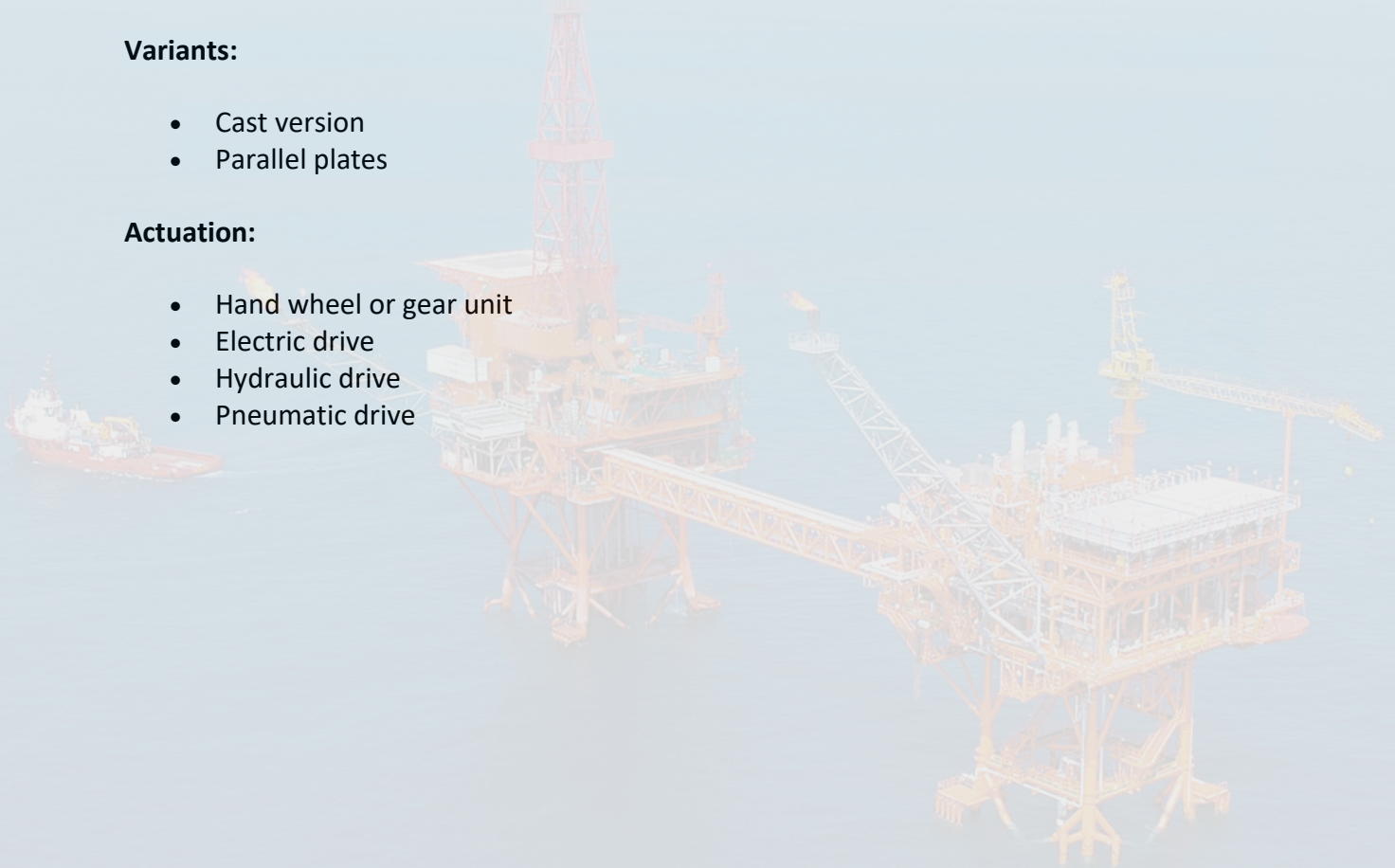
- made of forged steel
- with wedge plates
- ASME class 900 – 4500 / PN160 - 630
- NPS 2" – 36" / DN50 – 900
- as per ASME or DIN/EN standards
- with weld ends and flange
- for temperatures of -196 °C to 650 °C

Variants:

- Cast version
- Parallel plates

Actuation:

- Hand wheel or gear unit
- Electric drive
- Hydraulic drive
- Pneumatic drive





Shut-off valves with self-sealing cover closures or with bolted covers

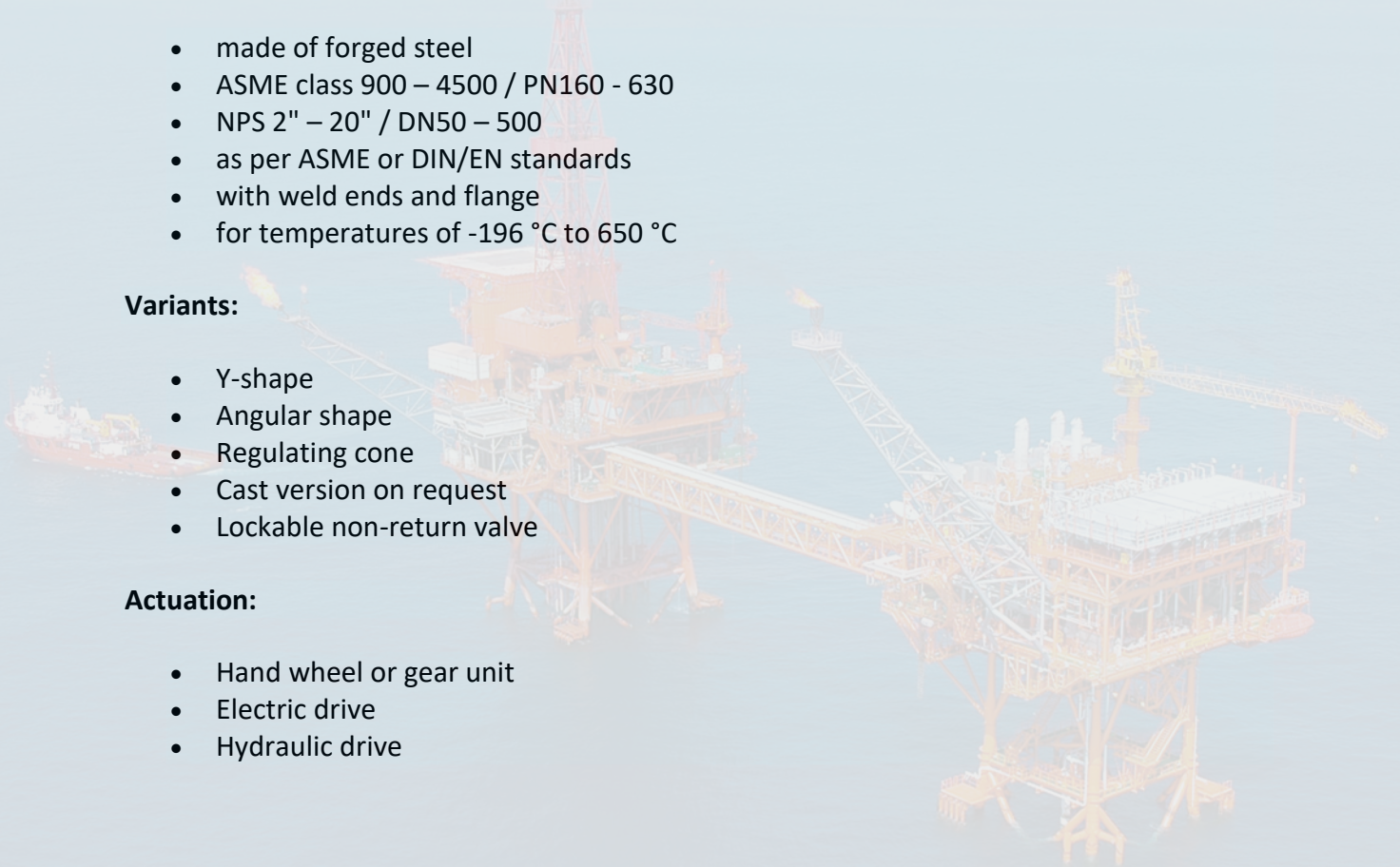
- made of forged steel
- ASME class 900 – 4500 / PN160 - 630
- NPS 2" – 20" / DN50 – 500
- as per ASME or DIN/EN standards
- with weld ends and flange
- for temperatures of -196 °C to 650 °C

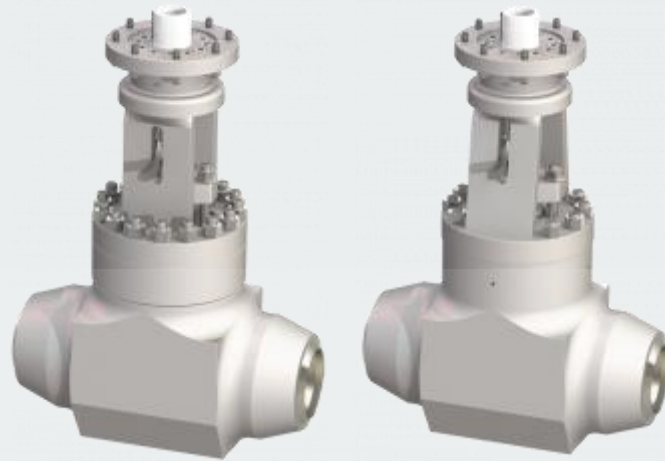
Variants:

- Y-shape
- Angular shape
- Regulating cone
- Cast version on request
- Lockable non-return valve

Actuation:

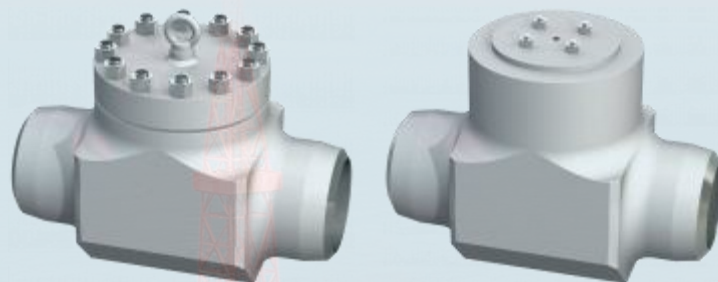
- Hand wheel or gear unit
- Electric drive
- Hydraulic drive





Check valves with self-sealing cover closures or with bolted covers

- made of forged steel
- ASME class 900 – 4500 / PN160 - 630
- NPS 2" – 32" / DN50 – 800
- as per ASME or DIN/EN standards
- with weld ends and flange
- for temperatures of -196 °C to 650 °C

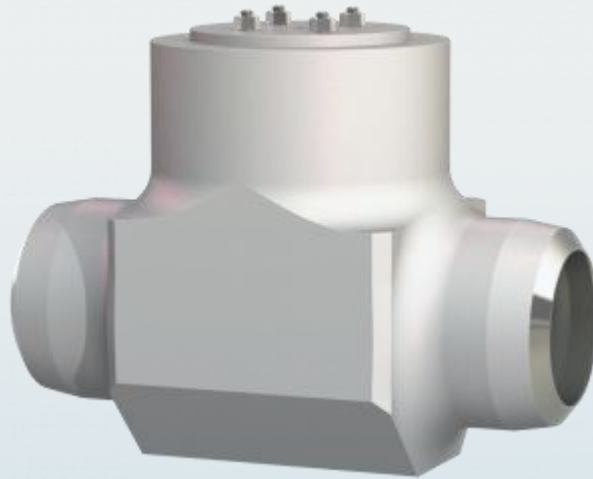


Dirt traps with self-sealing cover closures or with bolted covers

- made of forged steel
- ASME class 900 – 4500 / PN160 - 630
- NPS 2" – 20" / DN50 – 500
- as per ASME or DIN standards
- with weld ends
- for temperatures of -196 °C to 650 °C



Line blind valves



- made of forged steel
- ASME class 1500 – 4500 / PN160 - 630
- NPS 2" – 36" / DN50 – 900
- as per ASME or DIN standards
- with weld ends
- for temperatures of up to 650 °C

Preheater bypass valves

- made of forged steel, cast version on request
- Medium-controlled or with electric drive
- ASME class 900 – 4500 / PN160 - 630
- NPS 2" – 24" / DN50 – 600
- as per ASME or DIN standards
- with weld ends
- for temperatures of up to 400 °C

